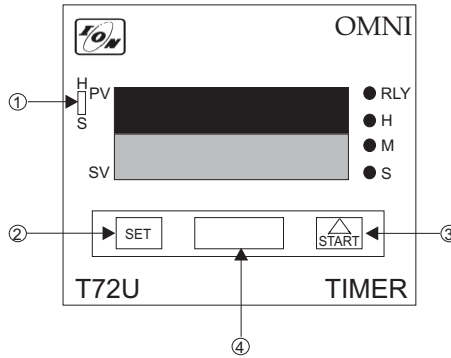


T72U

SPECIFICATIONS :

Control accuracy	: +/- 1% LSD (least significant digit)
Display	: 3 1/2 digit , 0.5" 7 segment RED LED
Accuracy	: 1% of the span
Operating voltage	: 230 V AC +/- 15% 50Hz
Size (in mm)	: 72(H) X 72(W) X 120(D)
Cutout	: 68(H) X 68(W)
Weight	: 750 gms.
Mounting	: Panel mounting
Power consumption	: 10 VA max.
Ambient temp.	: 0 c to 50 c
Storage temp	: 10 c to 50 c
Connection	: 10 amp. Terminal block for power supply, trigger & relay



FEATURES :

OP. Voltage	: 230 V AC +/- 15%, 50Hz
Display	: 0.3" seven segment RED LED for process time & GREEN LED for set time.
Accuracy	: 0.01 sec / hour using Quartz crystal
Size (mm)	: 72(H) X 72 X 125(D)
Relay	: Two changeover potential free contact of 5 amp. (Resistive) rating at 230 V AC External start with potential free contacts on front panel Hrs. Min. Sec. Mode Indication by LEDS & respective LED will blink every sec. As per the time set.

TROUBLE SHOOTING :

- 1) No display - check the mains connection as per diagram.
- 2) False indication - this will happen in case of sudden change in input voltage restart the timer. Connect snubber circuit across the load as shown in connection diagram.
- 3) No output at output point - check relay connection & its output.

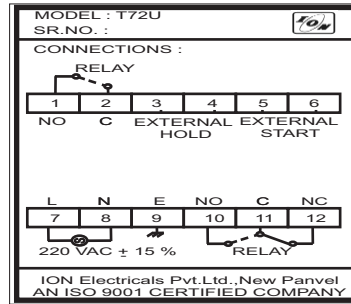
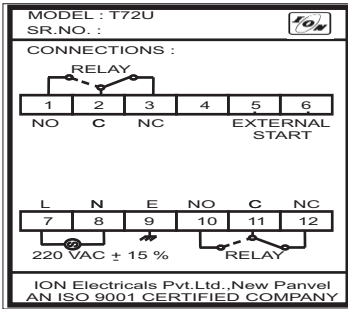
FRONT VIEW :

- 1) Switch for HOLD OR START
- 2) SET : Switch for SET mode
- 3) START : key start and increment key
- 4) Dip switch for selection of functions and range

RLY : Relay on indication
H : Hours mode LED on indication
M : Minutes mode LED on indication
S : Seconds mode LED on indication

User selectable by DIP switch on front panel

Range	: 1 to 9999 Hrs/Min/Sec. 0.1 to 999.9 Hrs/Min/Sec.
Mode	: Cyclic / Non cyclic
Counting	: Up / Down
Cyclic mode	: "ON" time first / "OFF" time first
Non cyclic mode	: Delayed " ON " / " OFF "
Start	: Power on start / key start



OPERATING INSTRUCTION

PROCEDURE- do the connection as per wiring diagram / label on the top of the box. Red display for actual time indication & green display for set time indication in the set mode can set relay " ON " time on red display & relay " OFF " time on green display. If you set power on start on dip switch then timer will start automatically on power on if you set key start then timer will show set count so start timer manually by start key or by external start point on rear terminals. Switch on the mains setting the desired combination of dip switch.

Push set key

Units digit of red display will blink. set it using increment key up to desired value (from 0 to 9).

Then push set key

Next digit will blink again set it using increment key up to desired value.

Then push set key

Next digit will blink do this up last digit if red display.

Then push set key

Now unit digit of green display will blink set it using increment key up to desired value (from 0 to 9) you are always setting relay OFF time ON green display.

Push set key

Next digit will blink. do the same procedure unit you reach to last digit of green display. as you reach to last digit of green display.

Push set key

New set point will get stored.

Then push start key .

To start the timer. If you want to skip any digit then set it to zero.

One can select delayed on OR delayed off operation by selecting non-cyclic mode & on time / off time first by dip switch

Terminal connections

- 1- Normally open contact of relay
- 2- common contact of relay
- 3- Normally close contact of relay
- 4- no connection
- 5- external START
- 6- external START
- 7- live (supply)
- 8- neutral (supply)
- 9- earth
- 10- Normally open contact of relay
- 11- common contact of relay
- 12- Normally close contact of relay

Terminal connections

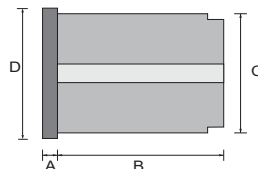
- 1- Normally open contact of relay
- 2- common contact of relay
- 3- external hold
- 4- external hold
- 5- external START
- 6- external START
- 7- live (supply)
- 8- neutral (supply)
- 9- earth
- 10- Normally open contact of relay
- 11- common contact of relay
- 12- Normally close contact of relay

DIP SWITCH :

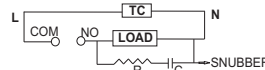
DIP SWITCH-1	DIP SWITCH-2	DIP SWITCH-3	RANGE
ON	ON	ON	0.1 SEC.
OFF	ON	ON	1 SEC.
ON	OFF	ON	0.1 MIN.
OFF	OFF	ON	1 MIN.
ON	ON	OFF	0.1 HRS.
OFF	ON	OFF	1 HRS.
ON	OFF	OFF	DEFAULT
OFF	OFF	OFF	DEFAULT

DIP SWITCH	STATUS	FUNCTION
4	ON OFF	DOWN UP
5	ON OFF	NON CYCLIC CYCLIC
6	ON OFF	POWER ON START KEY START
7	ON OFF	OFF TIME FIRST ON TIME FIRST

SIDE VIEW



CONNECTION FOR LOAD



R=56 OHMS / 2 WATT.
C=0.1 MFD / 250 V AC
TC=TIMER

If load is inductive,
connect snubber across load